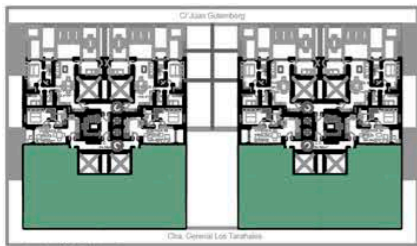
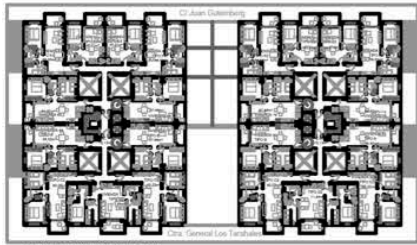


VIVIENDA TIPO F2

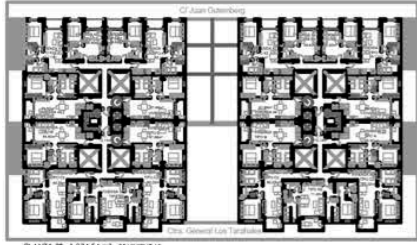
ÁTICO



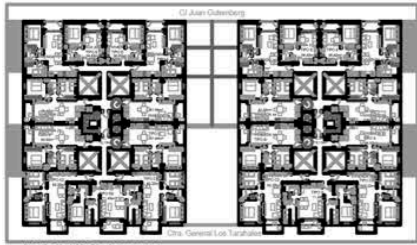
4ª



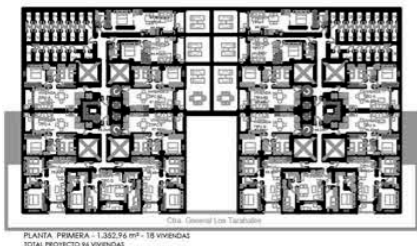
3ª



2ª



1ª



Vivienda F2	
Sup.Cons.	128.51 m2
Sup.Cons. con P.P.Z.C	149.87 m2
Salón / Comedor / Cocina	25.78 m2
Dormitorio 1	10.73 m2
Dormitorio 2	6.16 m2
Dormitorio 3	8.38 m2
Baño 1	3.85 m2
Baño 2	3.08 m2
Terraza	55.20 m2

