

Promueve:



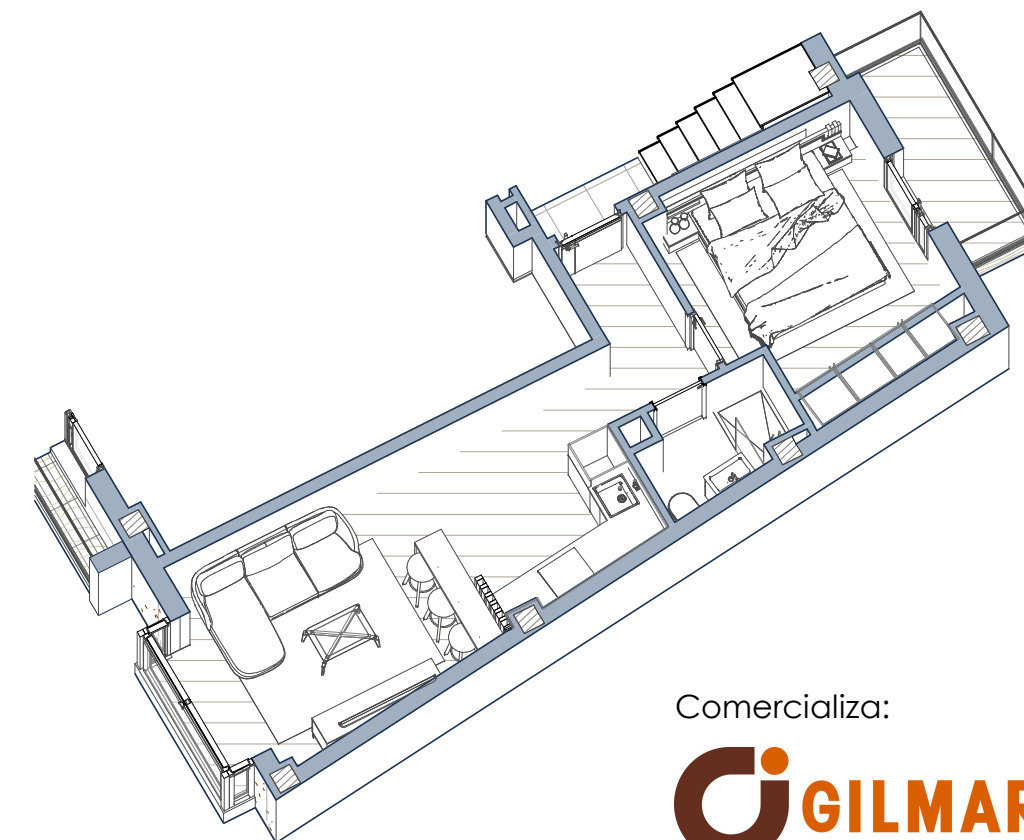
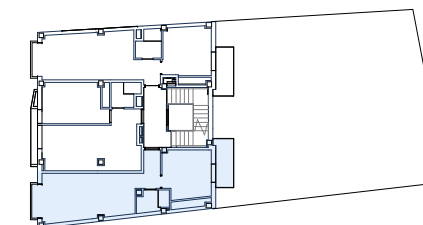
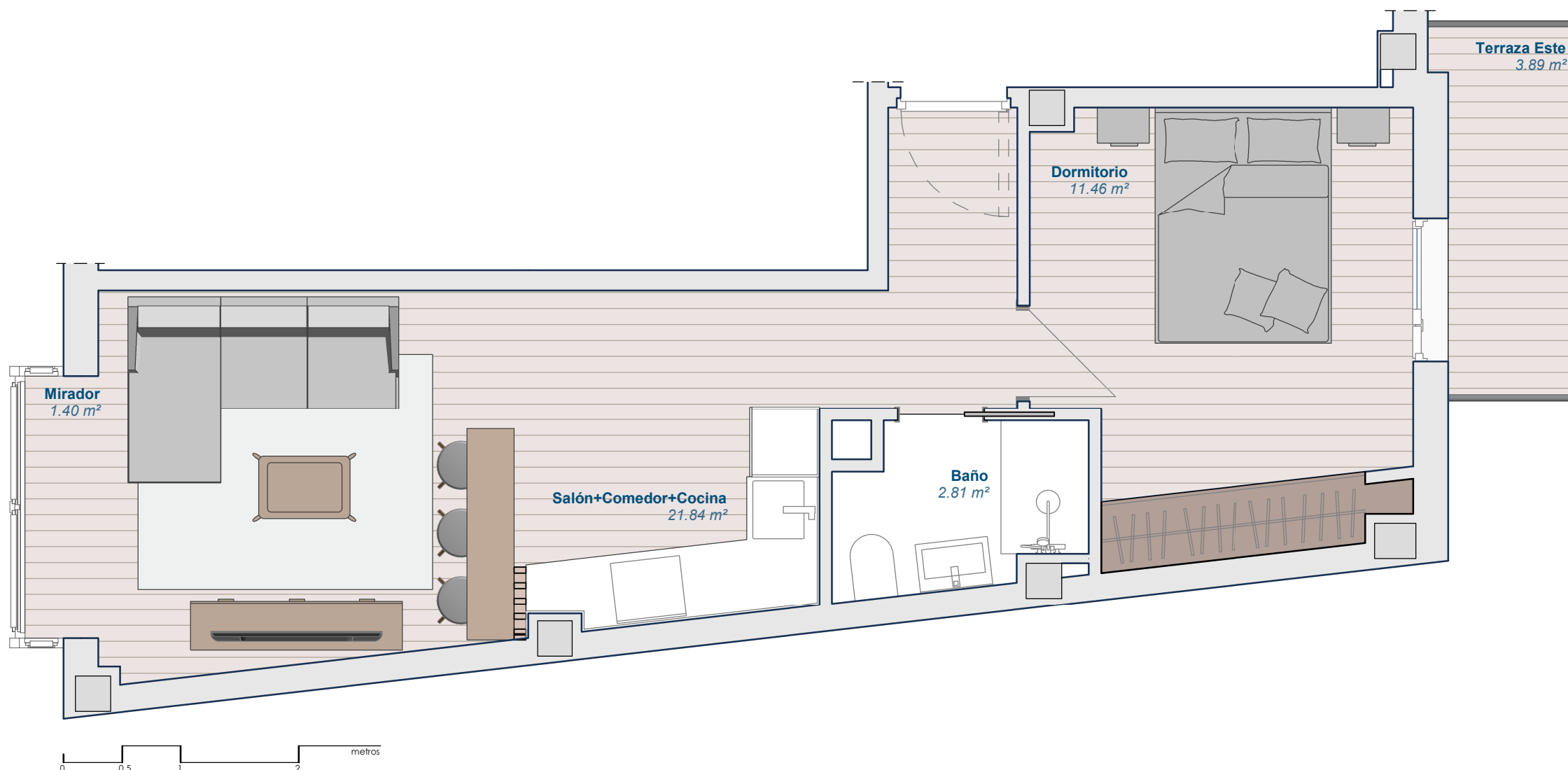
NSD18

c/ Nuestra Señora de los Dolores 18 (Madrid)

Apartamentos 1A & 2A

Superficies Útiles

Salón+Comedor+Cocina	21.84 m ²
Mirador	1.40 m ²
Dormitorio	11.46 m ²
Baño	2.81 m ²
Total Sup. Útil	37.51 m ²
Terraza (Este)	3.89 m ²
Sup. Construida con Comunes	59.27 m ²



VISTA ISOMÉTRICA

Comercializa:



91 209 32 80

PROMOCIONES@GILMAR.ES