

Promueve:



NSD18

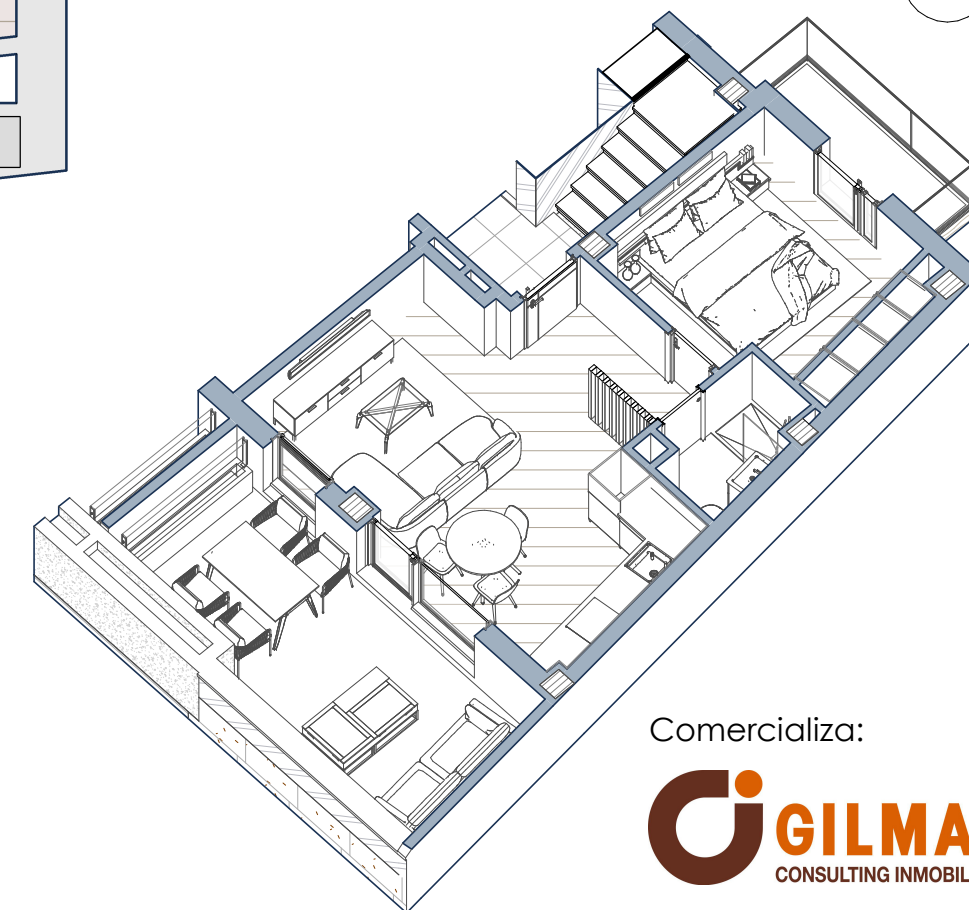
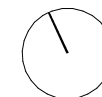
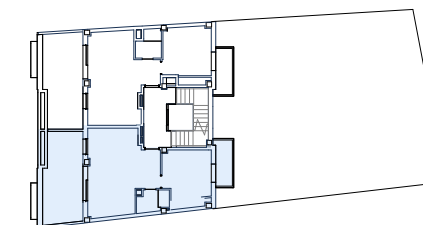
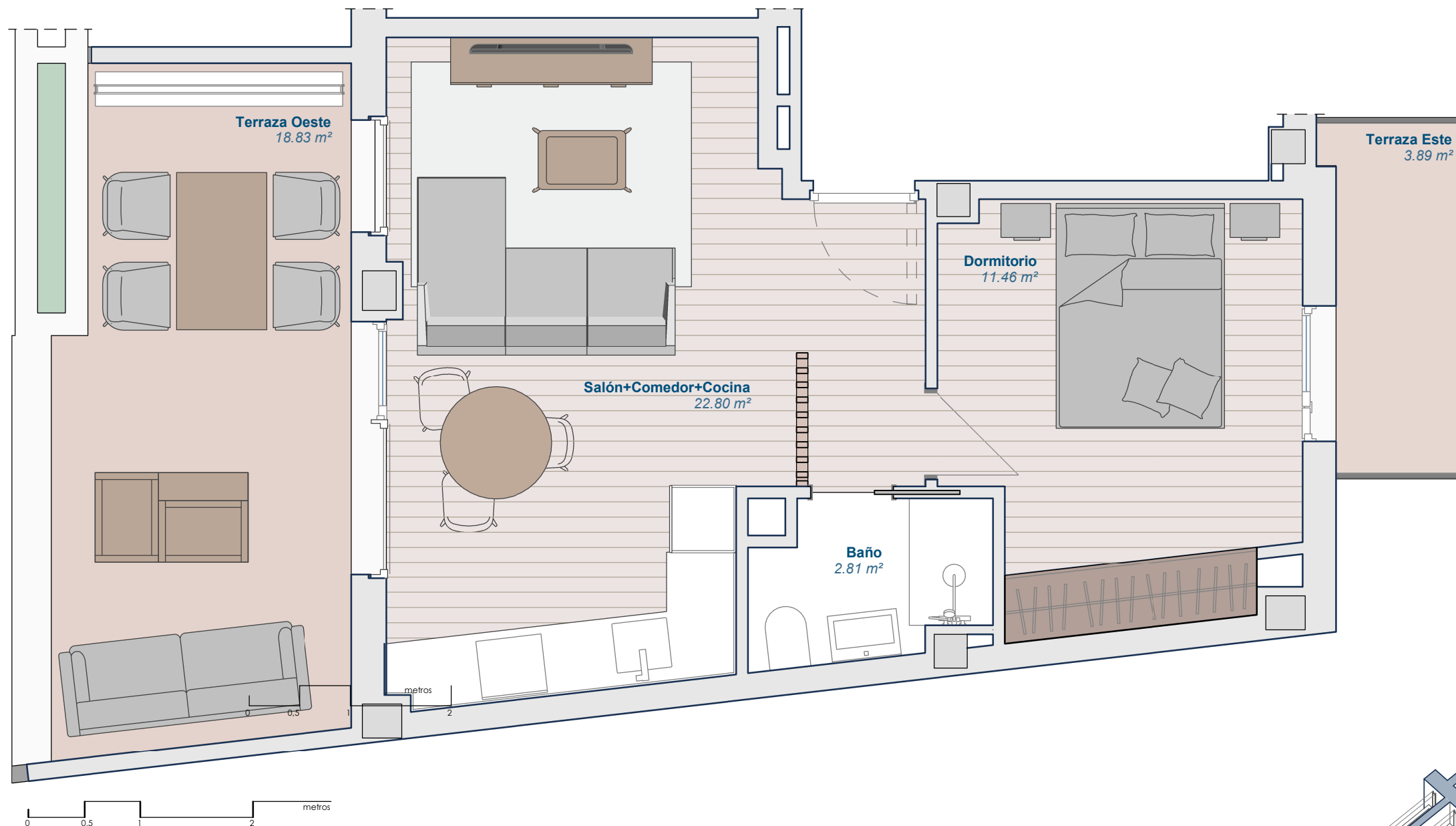
c/ Nuestra Señora de los Dolores 18 (Madrid)

Apartamentos Ático A

Superficies Útiles

Salón+Comedor+Cocina	22.80 m ²
Dormitorio	11.46 m ²
Baño	2.81 m ²

Total Sup. Útil	37.07 m ²
Terraza (Este)	3.89 m ²
Terraza (Oeste)	18.83 m ²
Sup. Construida con Comunes	58.97 m ²



Comercializa:



91 209 32 80

PROMOCIONES@GILMAR.ES

