

Promueve:



# NSD18

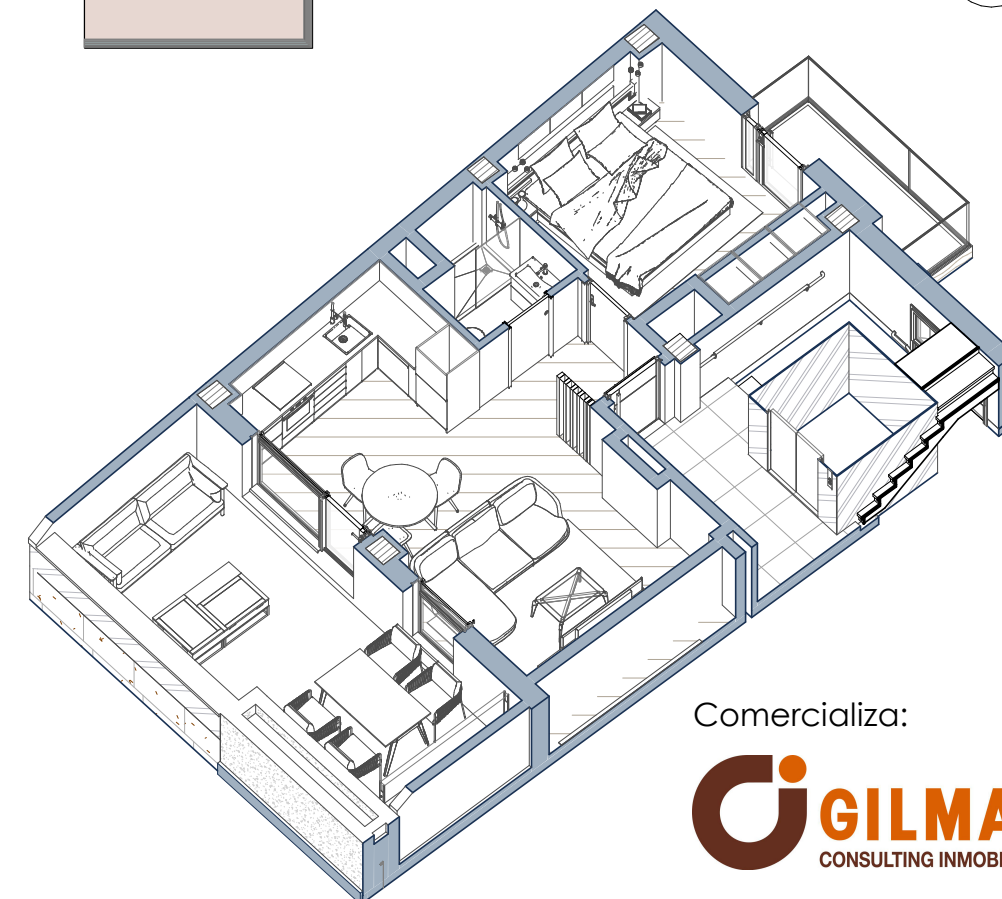
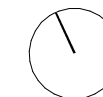
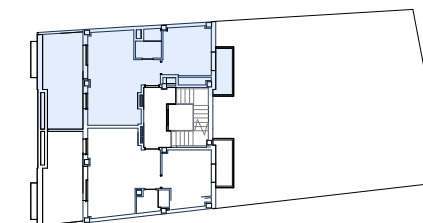
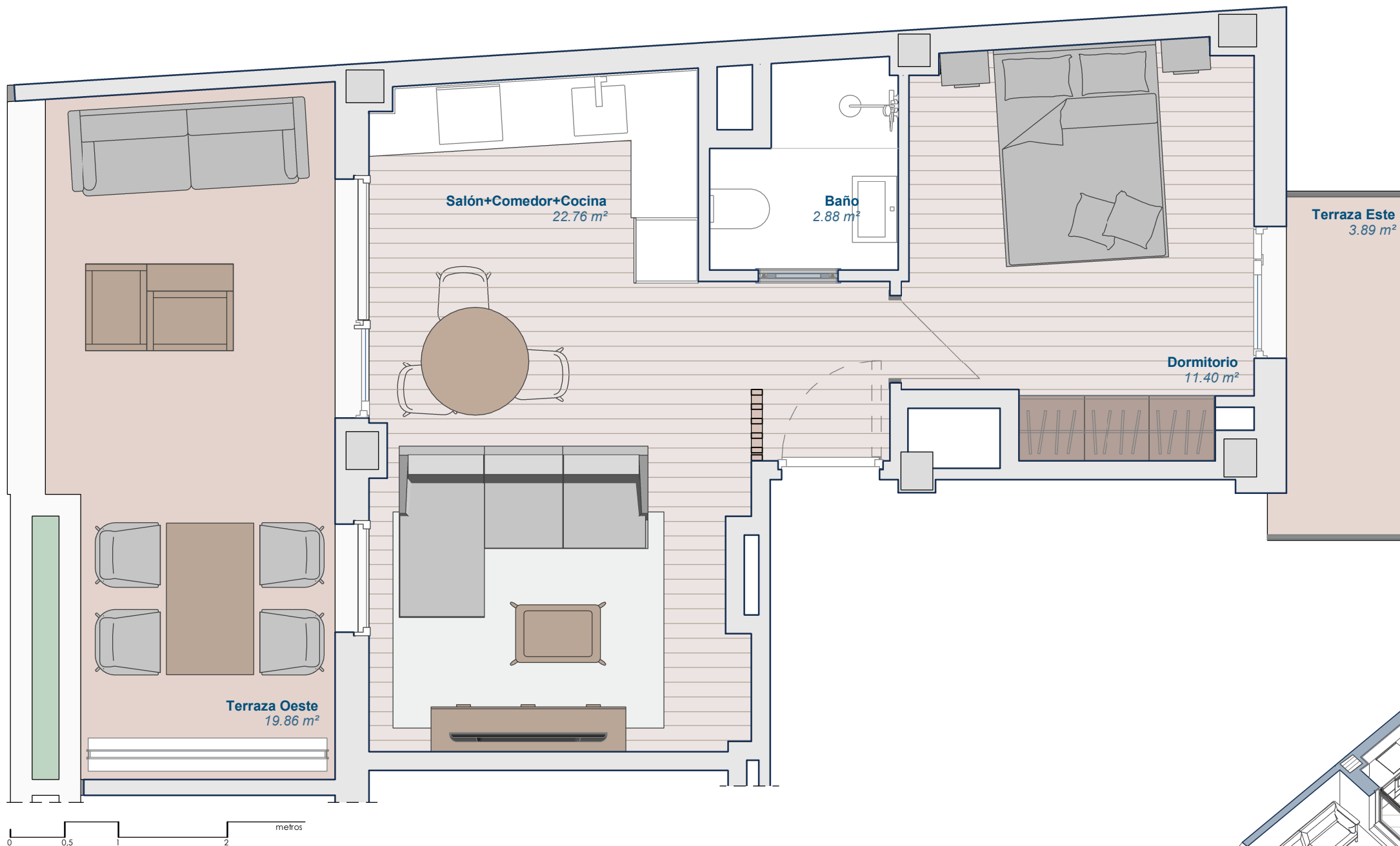
c/ Nuestra Señora de los Dolores 18 (Madrid)

## Apartamentos Ático B

### Superficies Útiles

Salón+Comedor+Cocina	22.76 m <sup>2</sup>
Dormitorio	11.40 m <sup>2</sup>
Baño	2.88 m <sup>2</sup>

Total Sup. Útil	37.04 m <sup>2</sup>
Terraza (Este)	3.89 m <sup>2</sup>
Terraza (Oeste)	19.86 m <sup>2</sup>
Sup. Construida con Comunes	59.60 m <sup>2</sup>



Comercializa:



91 209 32 80

PROMOCIONES@GILMAR.ES